

PROACT.®

REFERENCE : PA1009

SIZES : XS_S_M_L_XL_XXL

COMPOSITION :

Main fabric : Polyester / Viscose / Elastane Tech fleece 79/15/6

- 310 79%polyester / 15%viscose / 6%elastane

Main fabric : Polyester / Elastane Tech fleece 94/6 - 310 94%
polyester / 6%elastane

Fabric : Polyester / Viscose single jersey 65/35 - 145 For top
pockets 65%polyester / 35%viscose

WEIGHT :

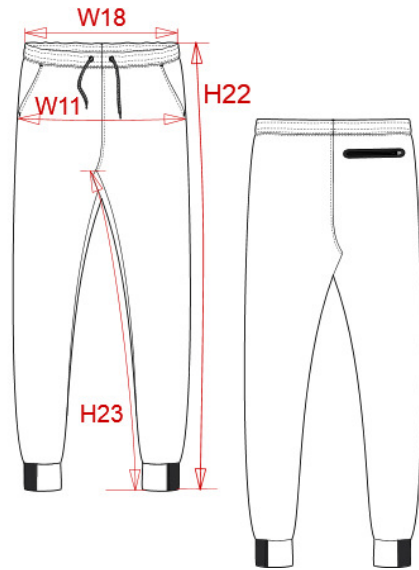
Main fabric : 310 gsm

Main fabric : 310 gsm

Fabric : 145 gsm

ARTICLE WEIGHT :

460 gr/pc



DESCRIPTION
Français : Pantalon femme
English : Ladies' performance trousers
Nederlands : Damesbroek performance
Deutsch : Damen-Funktionshose
Español : Pantalón de chándal performance de mujer
Italiano : Pantaloni Performance Donna
Português : Calças de senhora performance

COLORS	PANTONE SERIGRAPHIE
Deep grey heather	Based on 447C
Black	Black
French navy heather	Based on 432C
Ash heather	Based on Warm gray 1C

MEASUREMENT							
Description	XS	S	M	L	XL	XXL	
W18 (L) 1/2 taille élastiquée/ 1/2 waist elasticated	33	35	37	39,50	42	44,50	
W11 (L) 1/2 bassin / 1/2 hip width	44	47	50	53	56	59	
H22 (L) Longueur côté / Side length	98	99	100	101	102	103	
H23 (L) Longueur entrejambe / Inside leg length	76,50	76,75	77	77,25	77,50	77,75	

CARE LABEL

PACKING	
Box	20 pcs / box XS => L:60cm W:40cm H:20cm GW:8.3kg NW:7.3kg S => L:60cm W:40cm H:20cm GW:8.7kg NW:7.7kg M => L:60cm W:40cm H:20cm GW:9.1kg NW:8.1kg L => L:60cm W:40cm H:20cm GW:9.5kg NW:8.5kg XL => L:60cm W:40cm H:20cm GW:10.1kg NW:9.1kg XXL => L:60cm W:40cm H:20cm GW:10.5kg NW:9.5kg